

# Overview Accessories for KombiSIGN

## KombiSIGN 70 and 71

Bracket for 1-sided mounting,  
incl. rubber seals  
**Order no. 975 840 85**



Bracket for 2-sided mounting,  
incl. rubber seals  
**Order no. 975 840 86**



Base with integrated tube,  
Ø 25 mm, 110 mm long,  
plastic, incl. rubber seal  
**Order no. 975 840 10**



Adaptor for tube mounting  
Ø 25 mm / 1/2" NPT thread  
**Order no. 975 840 02**



Adaptor for single hole mounting  
Ø 25 mm, M18  
**Order no. 960 000 25**



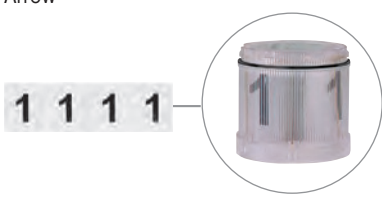
Bracket for surface mounting  
incl. cable gland  
M16 x 1.5  
**Order no. 960 000 02**



Cable gland for surface  
mounting, M16 x 1.5  
**Order no. 960 000 04**



Info transparencies  
**Order no.**  
Number "0" - "9" **975 840 50 - 59**  
Number "10" **975 840 92**  
Neutral **975 840 49**  
Arrow **975 840 62**



Tube with clamp, Ø 25 mm,  
250 mm long, incl. cable gland  
**Order no. 960 000 18**



Cable 5 m with M12 connector and plug  
**Order no. 960 000 46**  
Cable 5 m with M12 plug  
**Order no. 960 000 47**  
Cable 5 m with M12 connector  
**Order no. 960 860 01**




**Interface box and terminal element for KombiSIGN 71**  
(only for the permanent light element 641 X00 00 and corresponding light bulb (24V))  
Interface box and terminal element  
with 2 cable glands M16  
**Order no. 960 000 16**

**Drive:**  
**Interfaces:**  
**Assembly:**

Interface box and terminal element  
with 1 cable glands M16 and assembly  
**Order no. 960 000 17**

24 V DC  
RS 232, RS 485  
Network appliance with cable, connecting  
cable RS 232, 2 m long with Sub-D 9-pin  
and socket for power supply, CD with  
demonstration programme, programming  
handbook



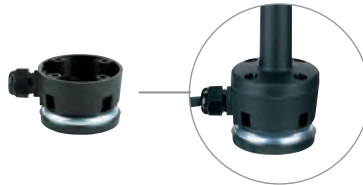
# Overview Accessories KombiSIGN

## KombiSIGN 50, 70 and 71

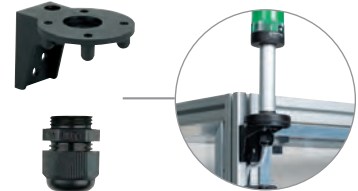
Contact box for cable exit  
at side, with mounting material  
and seal, cable gland M16 x 1.5  
**Order no. 975 840 01**



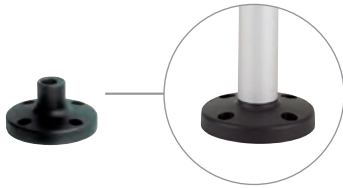
Contact box with magnetic  
base and cable exit at side  
cable gland M16 x 1.5  
**Order no. 975 840 04**



Bracket for tube mounting,  
incl. cable gland M16 x 1.5  
**Order no. 960 000 01**



Base for tube mounting, Ø 25 mm,  
plastic, incl. rubber seal  
**Order no. 975 840 90**



Base for tube Ø 25 mm, metal,  
incl. rubber seal, recommended for tube  
lengths of 400 mm and longer  
**Order no. 975 840 91**

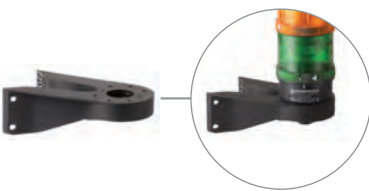


Bracket for base mounting,  
with concealed cable entry,  
incl. rubber seals  
**Order no. 960 000 14**



**NEW**

Corner fixing bracket  
**Order no. 960 000 41**



Tube Ø 25 mm, all anodized aluminium  
100 mm long **975 845 10**  
250 mm long **975 840 25**  
400 mm long **975 840 40**  
600 mm long **975 840 60**  
800 mm long **975 840 80**  
1000 mm long **975 840 03**



Indication board  
(for tube mounting)  
**Order no. 960 000 05**



- For one to five modules
- Simple mounting onto signal tower tube
- Ample space for written information
- Simply break off unwanted segments

LED bulb BA15d  
total length max. 42 mm  
Colours: red, yellow, green, clear, blue  
Voltage 24 V, 115 V, 230 V  
**Order specifications see page 185**



Bulb BA15d,  
total length max. 42 mm

12 V, 5 Watt **955 840 34**  
24 V, 5 Watt **955 840 35**  
30 V, 5 Watt **955 840 32**  
115 V, 5 Watt **955 840 57**  
230 V, 5 Watt **955 840 38**



**Dimensions of indication board (W x H):**  
153 x 345 mm

**Surface area per section (W x H):**  
c. 144 x 54 mm, e.g.  
Zweckform 3424 (105 x 48 mm),  
Herma 4281 (105 x 50.8 mm)  
(not included in assembly)

**Material:** PMMA

## KombiSIGN 50, 70 and 71

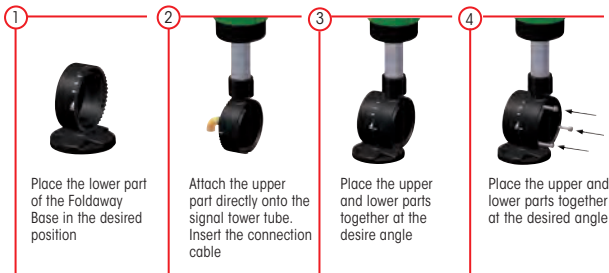
Foldaway Base - Signal Tower can be folded away, including rubber seal, for tube (all anodized aluminium) Ø 25 mm (not included in assembly)

Order no. 960 000 30

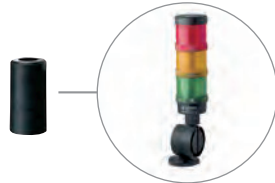


**Dimensions** (Ø x Height): 70 mm x 117 mm  
**Material:** PA-GF  
**Cable diameter:** Max. 14 mm  
**Fixing:** Vertical, horizontal,  
Positioning in 7,5° steps

### QUICK AND SIMPLE MOUNTING:



Tube Ø 25 mm, plastic, 45 mm long, for direct mounting of the Terminal Element onto the Foldaway Base (only for KombiSIGN 70 and 71)  
 Order no. 960 000 31



**NEW**

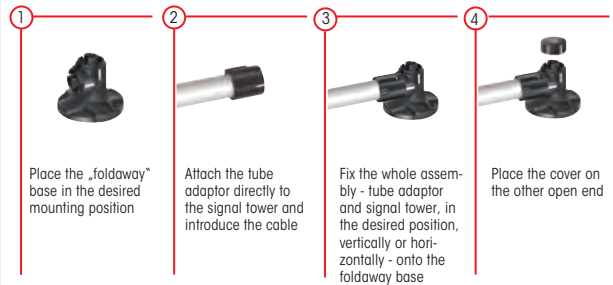
Foldaway Base - Signal Tower can be folded away, including rubber seal, for tube (all anodized aluminium) Ø 25 mm (not included in assembly)

Order no. 960 009 12



**Dimensions** (Ø x Height): 70 mm x 85 mm  
**Material:** PA-GF  
**Cable diameter:** Max. 8 mm  
**Fixing:** Vertical, horizontal,  
Positioning in 0° and 90°

### QUICK AND SIMPLE MOUNTING:



Tube Ø 25 mm, plastic, 45 mm long, for direct mounting of the Terminal Element onto the Foldaway Base (only for KombiSIGN 70 and 71)  
 Order no. 960 000 31

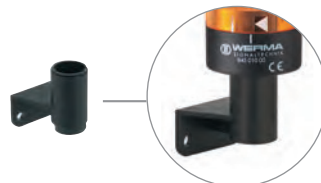


## KombiSIGN 50

Base for surface mounting, incl. rubber seal  
 Order no. 975 845 01



Bracket for wall mounting  
 Order no. 975 845 02



### TECHNICAL DIAGRAMS:

see page 327 onwards